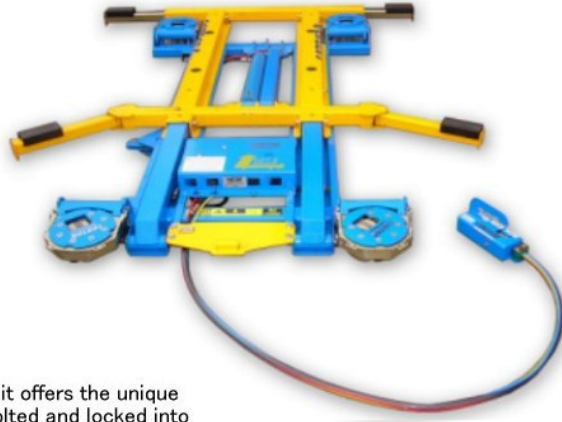
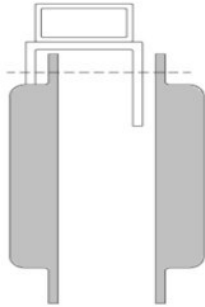




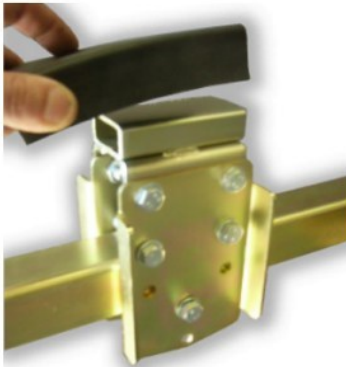
# Product Brochure

## CARTAR SUV KIT

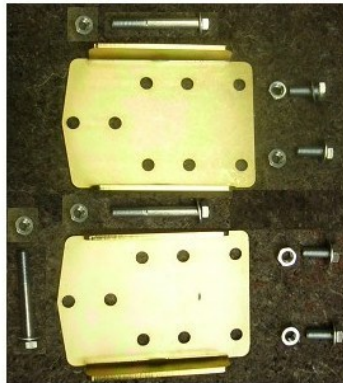


The Cartar SUV Kit offers the unique feature of being bolted and locked into your chosen position. This is vital because of the "mobile" feature of the Cartar FL. When lifting with your SUV Kit, do NOT exceed the max weight limit set for your Cartar FL.

The Hole pattern in your SUV Kit offers you the choice of 2 positions



Position B:  
100mm (5inches)

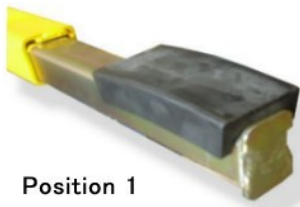


Cartar SUV Kit  
P/No. 6/CarSUV

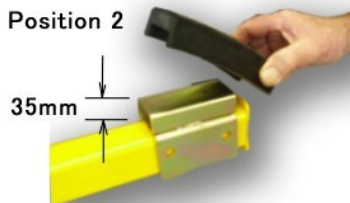


Position A:  
135mm (6.5 inches)

Below is the standard Cartar Bracket System that is supplied with all Cartar Lifts. The Cartar SUV Kit works in conjunction with this bracket. An operator will need the Cartar Bracket System to be able to use the SUV Kit.

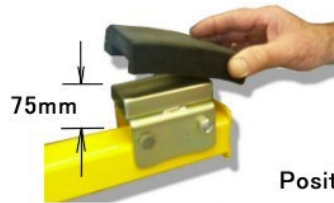


Position 1



Position 2

35mm



75mm

Position 3

Call • 02 9772 9000 visit • [www.sape.com.au](http://www.sape.com.au)

- QLD • Brett Fisher • 0404 889 239 •
- NSW • Neil McKell • 0412 349 917 •
- VIC • Dave Parsons • 0421 356 555 •



• Unit A3, 366 Edgar Street Condell Park NSW 2210 • P: 02 9772 9000 • F: 02 9772 9001 • W: [www.sape.com.au](http://www.sape.com.au) •