



# Product Brochure

## HIRANE SPOT WELDER

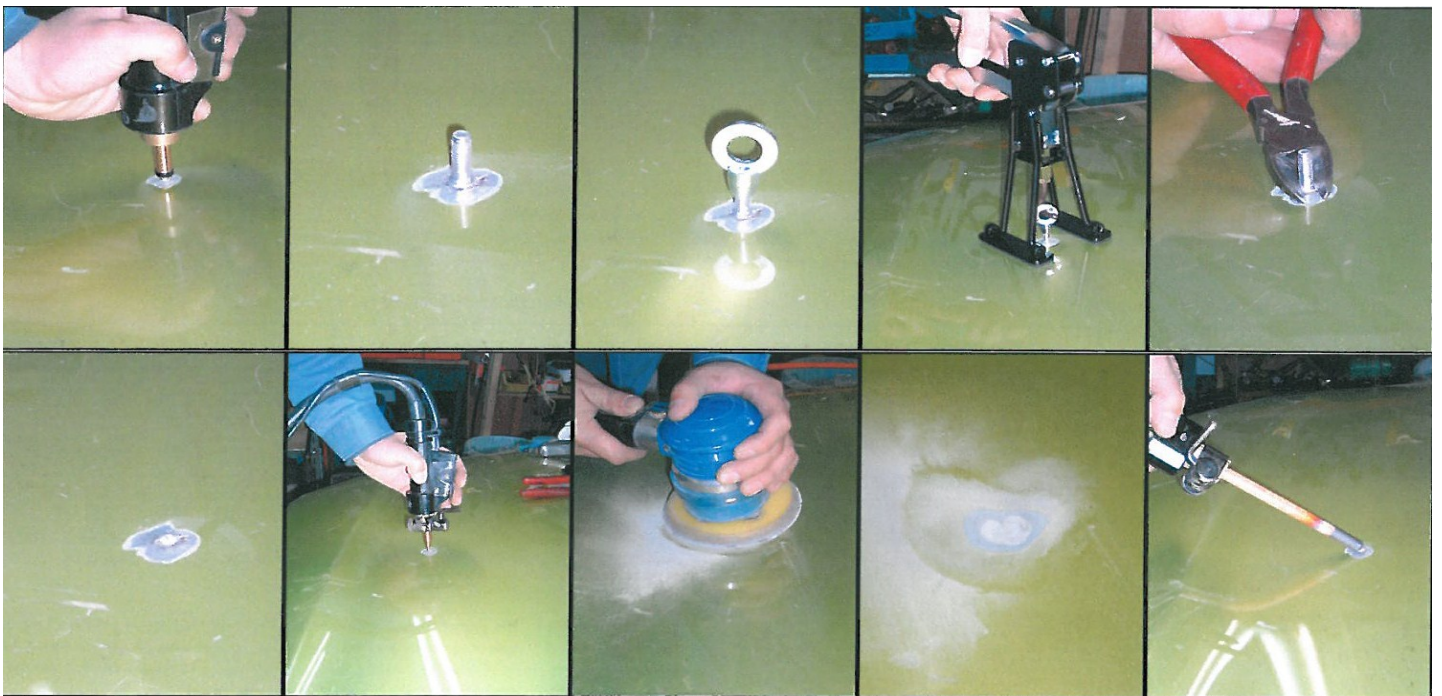
*Due to the design of these panels there is so much reinforcement on the rear side, its impossible most times to repair the panel resulting in high replacement cost. Now with the Hirane As1600 unit, a panel can be repaired simply...*

***The Hirane As1600 Combi unit offers the following features-***

- Repair dents on Aluminium panels using latest Captive Discharge welding
- Shrink & Re-tension the repair area on Aluminium panels
- Repair dents on steel panels using Captive Discharge welding or by using normal transformer setting
- Shrink & Re-tension the repair area on steel panels



**Example of the repair process to remove a dent from an Aluminium panel**



**Call • 02 9772 9000 visit • [www.sape.com.au](http://www.sape.com.au)**

- QLD • Brett Fisher • 0404 889 239 •
- NSW • Neil McKell • 0412 349 917 •
- VIC • Dave Parsons • 0421 356 555 •

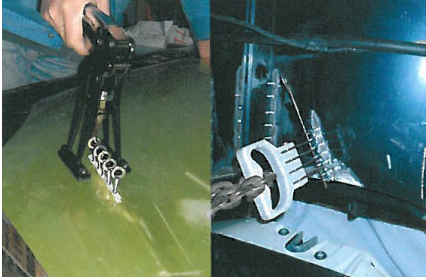


• Unit A3, 366 Edgar Street Condell Park NSW 2210 • P: 02 9772 9000 • F: 02 9772 9001 • W: [www.sape.com.au](http://www.sape.com.au) •



# Product Brochure

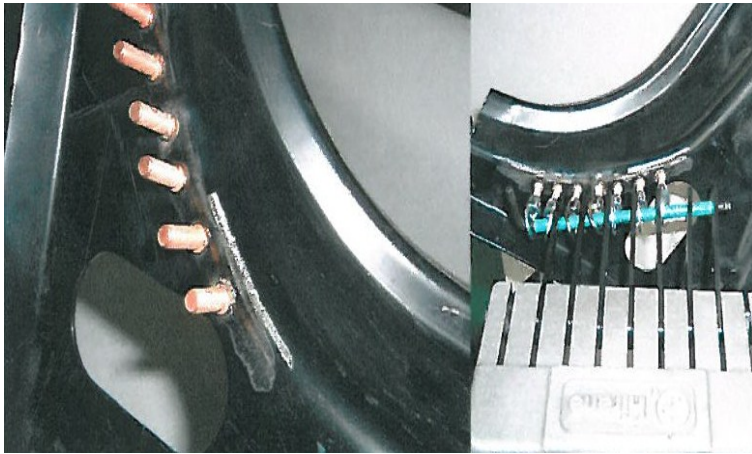
## HIRANE SPOT WELDER



*If a larger repair is needed on the aluminium panel a row of studs would be welded to the panel. Either by using the handy puller or pulling claw the dent can be pulled...*

### Features of the As1600 for Steel Dent Repairs

The As1600 Combi is designed to work on both Aluminium & Steel. When it comes to steel the As1600 offers the normal transformer type puller & the totally new Capacitor technology system. The unit can also be used for shrinking & tensioning steel panels. Many car manufactures are using thinner high-strength steel skin panels; Because of the thickness and the tension of these high-strength steel panels the new capacitor system gives so much more control to repair these panels



With the NEW capacitor technology from Hirane, we can weld 5mm pulling studs that give the following benefits-

- Each stud has 30 times greater surface area than a washer to pull from.
- Each stud you can apply up to 500Kg-1100lbs. Pulling force.
- No heat is created when welding stud, preventing any damage to High-strength steel.
- No burn through of paint or corrosion protection on rear-side of panel.

AS001 Rapid Puller (Optional) AS280 Handy Puller (Optional) AS295 Edge Puller (Optional) AS159 Line Puller Kit (Optional)



Call • 02 9772 9000 visit • [www.sape.com.au](http://www.sape.com.au)

- QLD • Brett Fisher • 0404 889 239 •
- NSW • Neil McKell • 0412 349 917 •
- VIC • Dave Parsons • 0421 356 555 •



• Unit A3, 366 Edgar Street Condell Park NSW 2210 • P: 02 9772 9000 • F: 02 9772 9001 • W: [www.sape.com.au](http://www.sape.com.au) •